

REKVEE INDUSTRIES LIMITED

121 HOWDEN ROAD, SCARBOROUGH, ONTARIO
(416) 751-1963

MANUFACTURERS OF
CANADA'S OUTSTANDING MOTOR HOME

ROUTEMASTER



The outstanding Routemaster motor homes of RekVee Industries Limited have rapidly become the standard of excellence of the motor home industry. Referred to as "the most striking motor homes in North America" by industry experts, Routemaster motor homes feature a unique one-piece unitized fiberglass body of exceptional strength and beauty.

Due to their advanced construction, RekVee Routemasters provide a standard of sound and heat insulation undreamed of in the old-fashioned motor homes of the nineteen sixties. Aerodynamic design, lightweight construction, and simplified control systems are provided to ensure that you will enjoy years of carefree operation in maximum comfort.

RekVee Routemasters are completely self contained, and all equipment is fully operational on the road, at a campsite, or parked in the wilderness beside your favourite hunting, fishing or skiing spot.

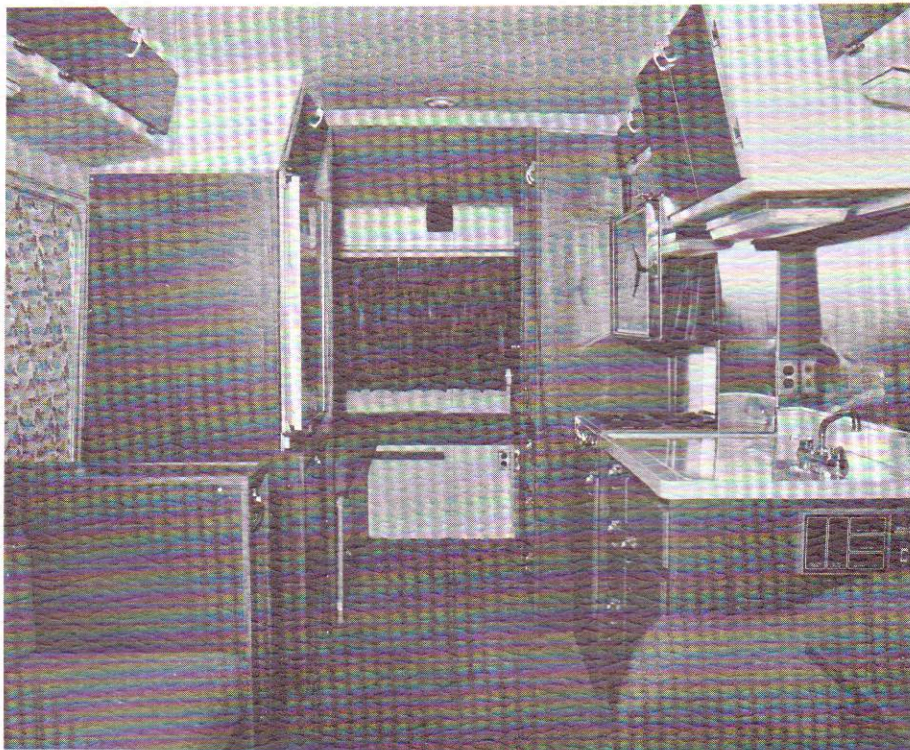
The Routemaster body is guaranteed a full five years, and will operate free of leaks, drafts, dust and road noise.

Enjoy the unequalled comfort of a Routemaster motor home. Your dealer will be pleased to assist you.

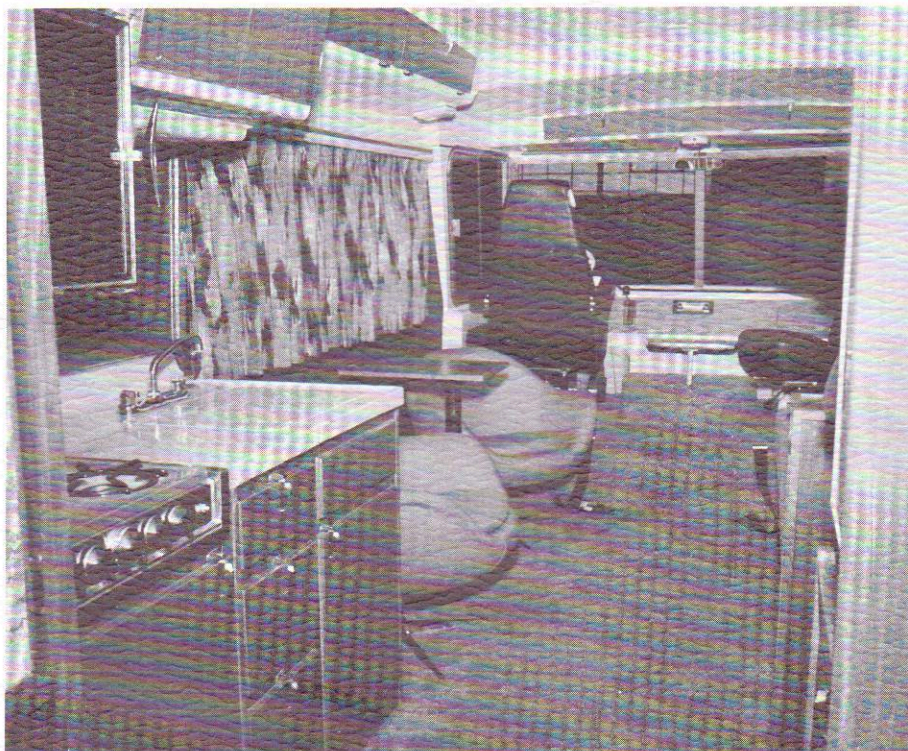
Below: angle view of Routemaster.



ROUTEMASTER ASSEMBLY LINE AT THE TORONTO, ONTARIO PLANT

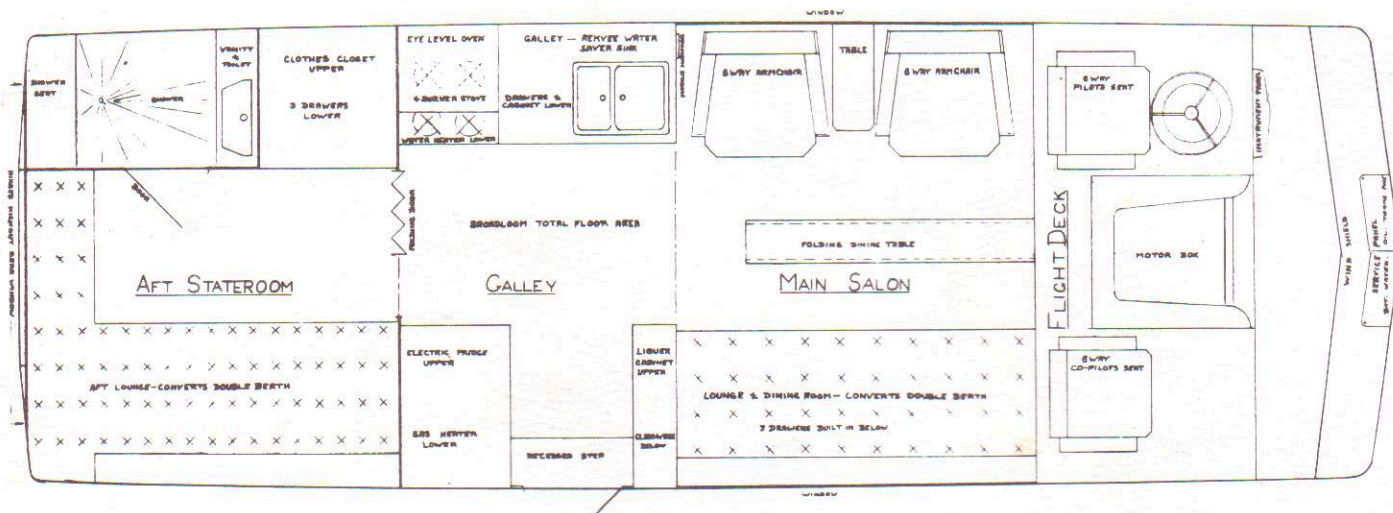


TWO VIEWS OF THE "A" INTERIOR
 – TAILORED TO PROVIDE MAXIMUM
 LIVING ACCOMMODATION –



LUXURY FEATURES

- Exclusive one-piece insulated fiberglass body. Soundproof Aerodynamic.
- Professionally designed interior decor. Choice of exterior colours.
- Wall-to-wall broadloom.
- Thermostatically controlled underfloor perimeter heating.
- Glass-front wall oven.
- Gas, Electric Refrigerator.
- Enclosed shower with Duomatic toilet.
- Heavy-duty chassis, 159" wheel base.
- Pneumatic ride available.
- Custom contoured six-way seats.
- Four-burner gas stove.
- Power steering, power brakes, automatic transmission.



"A" interior layout — alternate layouts available.

SPECIFICATIONS

Chassis — Dodge M 300 159" wheelbase. e.
 Engine — Chrysler, premium 318 cu. ins. — 212 HP.
 Equipment — Power steering, power brakes, automatic transmission.
 Tires — 750 x 16-6 ply.
 Dimensions — Length 24'; headroom 6'5"; interior width 7'8"; weight unladen — 7200 lbs.
 Body construction — One piece unitized insulated fibreglass body with 2" insulated floor.
 Interior headlining of frostex pattern.
 Windows — RVI extrusions, safety glass.
 Sleeps — up to seven on five-inch mattresses.
 Fresh water — 35 gallon storage, plus 35 gallon holding tank.
 Bathroom — Duomatic sanitation system — shower with holding tank — exhaust vent.
 Refrigerator — Gas, Electric
 4-Burner Stove — Coleman Holiday, with eye-level oven and power vent.
 Furnace — Thermostatically controlled under-floor perimeter heating.
 Water heater — electric 7.5 gallons.
 Safety belts.
 Lighting — High intensity 12 volt.
 Dual high-rise six-way adjustable driver and passenger seats.
 Wipers — Bus type panographic with washers.
 Custom designed RVI heavy-duty bumpers.
 Exterior 110 volt outlet. 12 volt converter.
 Roof venting.
 Roof reinforcement.
 Custom wheel hub caps.
 Wall-to-wall broadloom.

Specifications subject to change without notice.

OPTIONAL EQUIPMENT

Chrysler 413 cu ins. premium engine.	Commercial interior.
Spare tire.	Propane tank.
Generator.	Windshield curtains.
Air conditioner.	Mor-Ryde suspension.
Charger converter.	Heavy-duty shock absorbers.
Mobile monitor control panel.	8-ply tires.
Built-in stereo system; tape, disk, FM-AM, rear speaker.	Grey-lite tinted glass.
Luggage rack with ladder.	Waste disposal system.
Radio with rear speaker. AM-FM radio.	Non standard exterior colours.
Television.	Generator hour meter.
Trailer hitch.	Automatic speed control.
Whitewalls,	Spotlight
Auxiliary gas tank.	Water purifier.
Custom interior design.	Television Antenna.
	Dual batteries with changeover switch.

28 FOOT MODELS ALSO AVAILABLE
 Alternate Chassis by G.M., International, Ford.

DEALER