

SECTION 1 — INTRODUCTION

VEHICLE IDENTIFICATION NUMBER (VIN)

The VIN is the legal identification of the vehicle. It appears on a plate which is attached to the top left of the instrument panel on the G-Series chassis and can be easily seen through the windshield from outside the vehicle (Figure 1-3). On the P-Series chassis the VIN is attached to the front of the dash and toe panel to the left of the steering column. (See Figure 1-2) for pre 1990. Currently the VIN plate is located center and on top of the radiator support. The VIN also appears on the Vehicle Certificates of Title and Registration. Refer to Figure 1-4 to determine the vehicle manufacturer, model and chassis type, engine type, GVW range, model year, plant code and production sequence number.

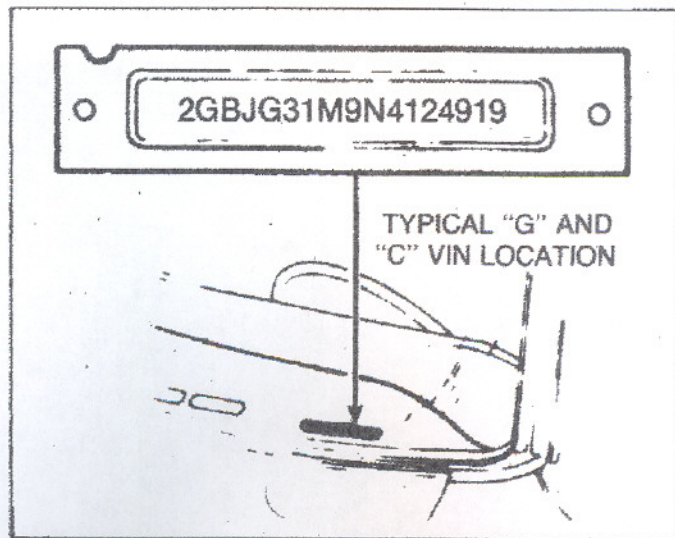


Figure 1-3 — Vehicle Identification Number (VIN)

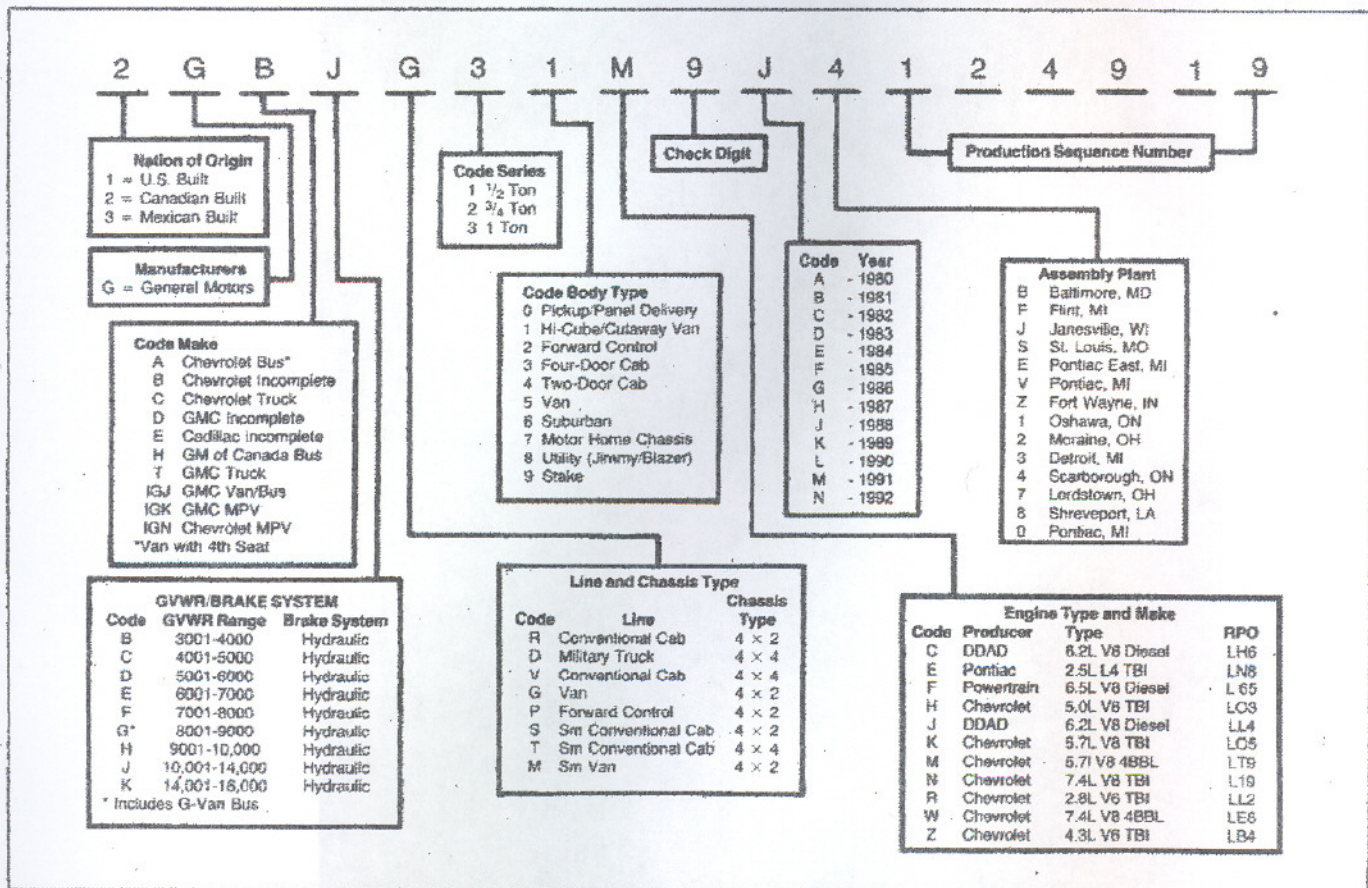


Figure 1-4 — Vehicle Identification Number Codes