



## THE LAND YACHT MOTORHOME

1998 Airstream Land Yacht Motorhome  
[www.ViewRVs.com](http://www.ViewRVs.com)





## LAND YACHT LOW-PROFILE MOTORHOMES

Built to advanced aerodynamic standards, Land Yacht pushes motorhome styling to a unique level—design so innovative that a patent has been granted for it. Its 40° angled windshield and smoothly integrated bumpers and headlamps significantly reduce cross and frontal wind resistance, road noise, and fuel consumption. You'll be amazed at how smoothly and precisely Land Yacht handles at highway speeds.

Under the hood, the Chevrolet Vortec engine (*standard on 30' and 33' models*) gives you more power and performance with less maintenance and greater fuel economy. Land Yacht's super high-gloss fiberglass skin gives it a truly striking appearance and is easy to maintain. Beneath the skin, rugged aluminum-framed sidewall construction gives it superior strength and stability without extra weight.

1998 Airstream Land Yacht Motorhome  
[www.ViewRVs.com](http://www.ViewRVs.com)



Land Yacht's rear bedroom is fitted with a luxurious queen-size bed, (or twin beds in gas models, if you prefer), two night stands, generous storage in closets and overheads, and telephone and TV jacks. A high-quality innerspring mattress assures you of a good night's sleep, and pleated night shades guarantee privacy.



The bathroom reflects the same regard for good design and good taste found throughout the Land Yacht. Residential-quality fixtures and appliances, skylights, bath or shower exhaust fans are standard. You'll appreciate the privacy and convenience afforded by Land Yacht's unique bath area layout. Doors can be positioned to separate the bathroom from both the bedroom and living area, so the enclosed central area becomes one extra-large bath/dressing room with mirrored, cedar-lined wardrobes.



A name brand 3-burner range top with lots of extra storage drawers underneath, microwave/convection oven, spacious solid oak cabinetry, luxurious Corian® countertops, a Moen® faucet, and water purifier with separate faucet are just a few of the features that will make the Land Yacht's galley such a joy for meal preparation. The raised-panel oak insert in the refrigerator doors make it an integral part of the decor.







## LAND YACHT WIDEBODY PUSHER

With all of the superb aerodynamics and the safe, comfortable road handling typical of all Land Yachts, the low-profile Widebody Pusher is even more spacious and comfortable inside. The extra width makes possible the finest Land Yacht interior, with a wider aisle, increased storage, and greater livability.

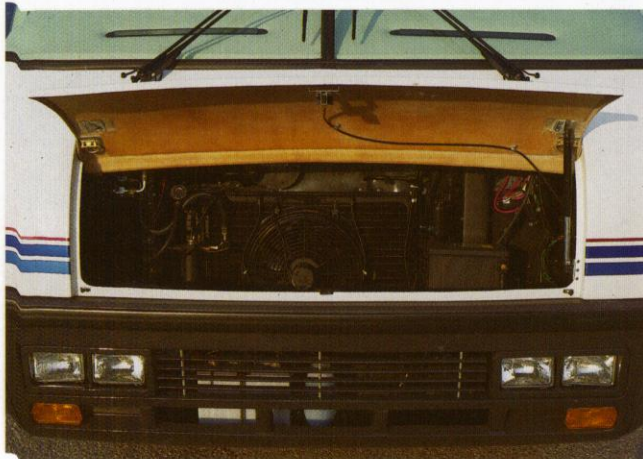
Built on a Cummins-powered Freightliner chassis, the Widebody

gives you all the power you'll need for smooth, economical cruising, even when towing your car. Air-Ride® suspension and powerful air brakes add greater stability and safety, and rear-engine drive means even better handling and a smoother, quieter ride. The chassis also allows for larger, deeper, semi-basement storage compartments, so you can take along everything you'll need.

1998 Airstream Land Yacht Motorhome  
[www.ViewRVs.com](http://www.ViewRVs.com)



A huge rear trunk and lots of full-sized, lighted exterior compartments give you up to 85 cu. ft. of exterior storage in a Land Yacht. (30' and 33' only)



Land Yacht's hinged hood can be removed for even easier servicing. The large opening allows free access to the 3 batteries, and fluid level checks. Front airbag pressure on the Chevrolet chassis can be easily checked by means of the extended valve stems under the hood. (30' and 33' only)



Land Yacht's large, integral, automotive-style driver's door gives convenient access to the driver's compartment. A power window, map pocket, and fingertip controls greatly increase driver's convenience and safety. (30' and 33' only)

The Land Yacht's unique Service Access Center makes routine maintenance functions quick and easy. Located under the bed, the center gives you ready access to the 110-volt circuit breakers, the water-line drain valves, and the water pump and Pump-Guard® filter. (30' and 33' only)







A spacious fiberglass shower with skylight and residential-style pivoting glass door brings the convenience of home to every 35' Land Yacht.



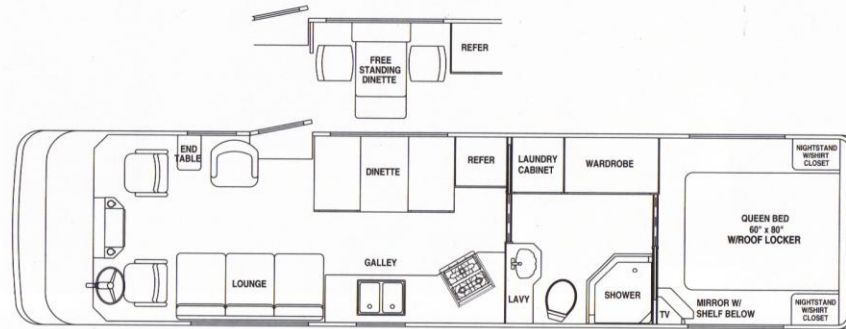
For the ultimate in motorhome convenience, you'll love the 35' Widebody's optional washer/dryer combination. Located in the bath/dressing room area, it performs both washing and drying, saving you the time and trouble of a laundromat.



With the converter located behind the passenger side kick-plate, the under-sink compartment is available for impressive storage.

# LAND YACHT FLOORPLANS AND SPECIFICATIONS

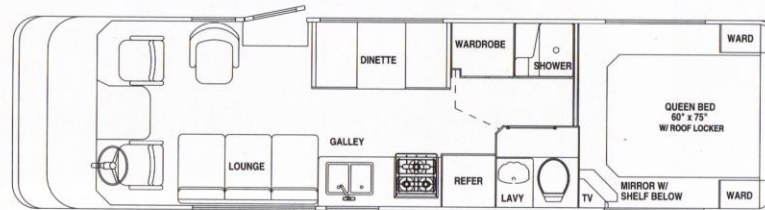
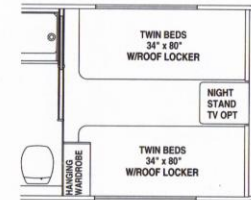
With Airstream's nearly Sixty-five years of experience building vehicles that have become American institutions, you can feel confident your Airstream Land Yacht is designed for truly outstanding livability. Land Yacht floorplans represent the ultimate in space planning for comfort and convenience, with truly impressive storage capacity and many standard features that are expensive options on other motorhomes.



35' Land Yacht Widebody Diesel Pusher  
available with optional free-standing dinette



33' Gas-powered Land Yacht  
available with optional twin beds



30' Gas-powered Land Yacht  
available with optional twin beds



# THE LAND YACHT MOTORHOME STANDARD FEATURES AND OPTIONS

CHASSIS			GAS 30' 33'	DIESEL 35' WB	DRIVER'S COMPARTMENT			GAS 30' 33'	DIESEL 35' WB	APPLIANCES			GAS 30' 33'	DIESEL 35' WB	APPLIANCES			GAS 30' 33'	DIESEL 35' WB
230 HP Cummins w/6-speed Allison Transmission	NA	NA	S		Powered Driver Seat	S	S	S		VCP w/Light in Cabinet (12-volt) w/Video Control Center (VCC)	O	O	S	LPG Detector	S	S	S		
275 HP Cummins w/6-speed Allison Transmission	NA	NA	O		Powered Co-pilot Seat	O	O	S		TV Antenna w/Booster, Cable, Telephone Hook-Up	S	S	S	Smoke Detector	S	S	S		
100-amp Alternator w/Heavy-duty Isolator	NA	NA	S		Tilt Steering Wheel	S	S	S		C.B. Radio w/Separate Antenna	NA	NA	S	<b>SYSTEMS/ELECTRIC</b>					
124-amp Alternator w/Heavy-duty Isolator	S	S	NA		Rearview Interior Mirror	S	S	S		19" TV in Dash w/Interlock	S	S	S	30-amp Service	S	S	NA		
Battery Disconnect (coach batteries)	S	S	S		Map Lights and Dome Light	S	S	S		13" TV AC/DC in Bedroom	S	S	S	50-amp Service	O	O	S		
Battery, Main (1)	S	S	S		Prewire for Cellular Phone	NA	NA	S		8 cu. ft. 2-way Auto. Refrigerator	S	S	NA	50-amp Power Center (converter)	S	S	S		
Batteries, Auxiliary (2)	S	S	S		Privacy Wrap-around Black-out Curtain	S	S	S		w/Ice Maker (3-way on Widebody)	O	O	S	5-watt Solar Electric Panel w/Volt Meter	S	S	S		
Pantograph Wipers w/Wet Arm & Controlled Cycle	S	S	S		Glove Box	S	S	S		3-burner cooktop w/Oven and Black Glass Door	O	O	O	1,500-watt Inverter w/(2) Additional Auxiliary Batteries	NA	NA	O		
Electric-operated Entrance Step	S	S	S		Inside Hood Release	S	S	S		3-burner cooktop w/Storage Drawers	S	S	S	130-watt Inverter (dash TV)	O	O	S		
Emergency Start Solenoid, Momentary	S	S	S		Headlight-on Buzzer	S	S	S		Microwave/Convection Oven	S	S	S	35,000 BTU Furnace	S	S	S		
Leveling Jacks, Touch Pad	O	O	S		12-volt Receptacle (2), w/(1) Lighter	S	S	S		Washer/Dryer Combination	NA	NA	O	12-volt Fluorescent Recessed Lighting	S	S	S		
Bright Wheel Simulators	S	S	S		<b>GALLEY</b>					6-gallon Water Heater & DSI w/MotorAid®	S	S	S	Fan-Tastic® Roof Vent w/Built-in Thermostat & Rain Sensor (lounge)	S	S	S		
Alcoa Aluminum Wheels	NA	NA	S*		Oak Plank Flooring	O	O	NA		Water Heater By-pass	S	S	S	5.5-KW Generator Set	S	S	NA		
Radial Tires	S	S	S		Corian® Galley Top w/Backsplash, Porcelain Sink	S	S	S		Water Purifier w/Separate Faucet (NA CSA)	S	S	S	6.5-KW Generator Set—LPG	NA	NA	S		
Spare Tire & Wheel	S	S	NA		Sink Cover (2)	S	S	S		13,500 BTU Air Conditioners (2) w/Heat Strip	NA	O	S	7.0-KW Diesel Generator	NA	NA	O		
Air Brakes/Air-Ride®	NA	NA	S		Spice Rack	S	S	NA		13,500 BTU Air Conditioner w/Heat Strip	S	S	NA	Heated Holding Tanks	S	S	S		
Rear Automotive Heater	S	S	S		Skylight w/Black-out Shade Galley Area	O	O	S		11,000 BTU Air Conditioner w/Heat Strip	S	S	NA	Exterior Water Service w/Shut Off	S	S	S		
Trailer Hitch 4000 GVW 400 HW	S	S	S		Trash Container Galley	NA	S	S		<b>INTERIOR DECOR</b>			Rearview TV Monitor, Audio/Video, 2-position	O	O	S			
<b>EXTERIOR</b>					<b>INTERIOR DECOR</b>					Oak Hardwood Tables & Countertops w/No-mar Finish (lounge/dinette)	S	S	S	Deluxe Monitor Panel	S	S	S		
Textured Fiberglass Roof	S	S	S		Ceramic Tile Floor (galley/bath)	NA	NA	S*		Oak Cabinets	S	S	S	* Feature Available March 1998					
Undercoating (wheel well only)	S	S	S		Oak Cabinets	S	S	S		Lounge w/Storage Drawer	S	S	S						
Awning (patio)	S	S	S		Solid Oak Face Frames	S	S	S		Pleated Day/Night Shades (lounge/dinette)	S	S	S						
Awning Rail—R.S and C.S.	S	S	S		Pleated Day/Night Shades (lounge/dinette)	S	S	S		38" Dinette	N/A	S	S						
Window Awnings (NA CSA)	NA	NA	S*		32" Dinette	S	N/A	N/A		<b>BATHROOM DECOR</b>									
Dual Pain Windows	NA	NA	S*		Frameless Mirrors	S	S	S		Toilet w/Water Saver	S	S	S						
30" Entry Door	S	S	S		Fiberglass Shower Stall w/Neo-angle Door	N/A	N/A	S		Fiberglass Shower w/ Single-pivot Door	S	S	N/A						
Docking Lights, Halogen	S	S	S		Fiberglass Shower w/ Single-pivot Door	S	S	N/A		Skylight in Shower	NA	O	S						
Driving Lamps, Halogen	S	S	S		Skylight in Shower	NA	O	S		Skylight Bath w/Black-out Shade	O	O	NA						
Headlights, Halogen	S	S	S		<b>BEDROOM</b>					Cedar-lined Wardrobes, Lighted, Mirrored w/Oak Doors and Bottom Drawers	S	S	S						
Exterior Lighting Package: Patio Light, Utility Light & Step Light	S	S	S		Innerspring Mattress	S	S	S		Bedspring Mattress	S	S	S						
Air Horns (behind grille)	NA	NA	S		Bedspring Mattress	S	S	S		Bedspring & Pillows	S	S	S						
Electric Keyed Deadbolt at Main Door	S	S	S		Pleated Night Shades Bedroom	S	S	S		Pleated Night Shades Bedroom	S	S	S						
Exterior Powered Mirrors w/Remote Control	S	S	S		Shirt Closets w/Adj. Shelving (N/A twin)	S	S	S		Shirt Closets w/Adj. Shelving (N/A twin)	S	S	S						
Rear Ladder	S	S	S		Fan-Tastic® Roof Vent w/Wall Thermostat in Bedroom	O	O	O		<b>APPLIANCES</b>									
<b>DRIVER'S COMPARTMENT</b>					<b>APPLIANCES</b>					Mobile Theater Surround-sound System includes: VCP, CD Changer w/Remote and Prewire for Satellite Dish	NA	NA	S*						
Digital AM/FM/Cassette w/4 Speakers	S	S	NA		<b>DRIVER'S COMPARTMENT</b>														
Digital AM/FM/Cassette w/6 Speakers	NA	NA	S		Powered Driver Seat	S	S	S											
Control Stick w/Cruise Control, Turn Signal & Wipers/Washers	S	S	S		Powered Co-pilot Seat	O	O	S											
39" Driver's Door w/Power Window	S	S	NA		Tilt Steering Wheel	S	S	S											
Auxiliary Defroster Fans	O	O	S		Rearview Interior Mirror	S	S	S											
Automotive Air Conditioner w/Side Window Defroster & Bi-level Function	S	S	S		Map Lights and Dome Light	S	S	S											
Leather Driver & Co-pilot Seats w/Swivel & Reclining Mechanism	S	S	S		Prewire for Cellular Phone	NA	NA	S											

*Specifications are subject to change without notice. Canadian specifications will differ from U.S.*