



CUTTER 35 PUSHER MOTORHOME

1998 Airstream Cutter Diesel Pusher
www.ViewRVs.com



CUTTER 35'

Airstream's Cutter motorhomes bring you Airstream manufacturing excellence and bus-style floorplan flexibility. And the Cutter 35' pushers are the most spectacular Airstream motorhomes ever! A Freightliner chassis gives you safe, sure handling plus all the carrying capacity you're likely to need, while the 300 HP Caterpillar diesel

provides steady, reliable power for any driving conditions. As with its new front entry-door, the Cutter 35' floorplans are the most "residential" we've ever designed. And now the new galley slide-out brings a new dimension of livability to motorhome travel. *(Shown above in Blue Bayou)*



As of February, 1998, the Cutter 35' will feature a Mobile Theater Sound System for incredible surround-sound playback from the video player. And it's prewired for a satellite dish, too.



The Cutter's floorplans offer the spaciousness, luxury and innovation of much more expensive bus-style motorhomes. Large sofas and free-standing dinettes give the Cutter a true residential feel; and all furniture is upholstered in stylish, high-grade fabrics. Large tinted windows let in plenty of light, but handsome pleated day/night shades in the living areas and pleated night shades in the bedroom give you all the privacy you require. The heir to Airstream's decades of experience in space planning, the Cutter offers the very best in motorhome livability.

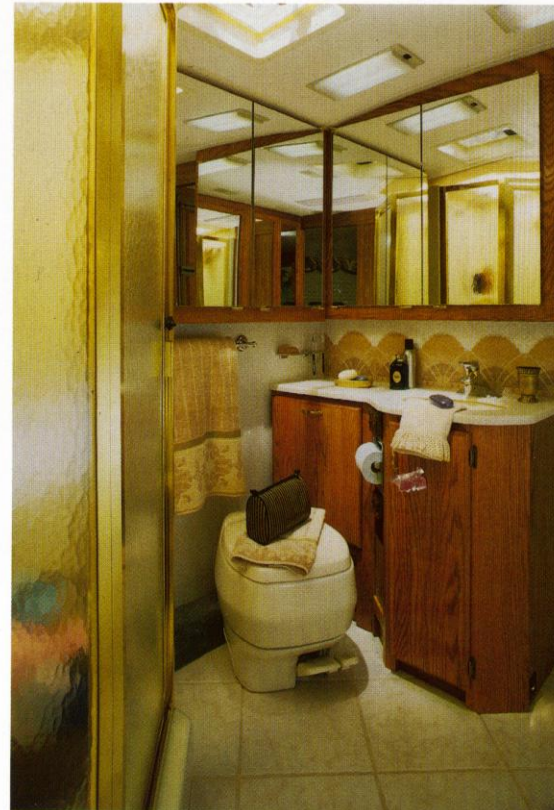
The driver's compartment fully reflects Airstream's decades of design experience. All controls are logically located and within easy reach. Standard widebody leather cockpit seating with Integrated 3-point Seatbelt System is specially chosen for comfort, safety, and maneuverability and the huge panoramic windows give you spectacular views. *(Shown above in Blue Bayou)*

1998 Airstream Cutter Diesel Pusher
www.ViewRVs.com



Galleys in all Cutter motorhomes are designed for your convenience. Corian® countertops are easy to clean as well as beautiful and durable. A three-burner cooktop with pan storage features one high-intensity burner for faster heating; a double-door refrigerator offers lots of capacity. As is typical of all Airstream vehicles, careful planning maximizes storage.

The ceramic tile floor in the galley, hall, and bathroom brings the Cutter 35's decor to a new level, while making clean-up easier than ever.

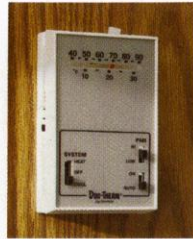


In most models the luxurious bath area features doors that allow it to convert to a convenient dressing room. In addition, a Corian® vanity top, a one-piece fiberglass shower with residential-style door, power vents and skylight add to the home-like qualities.

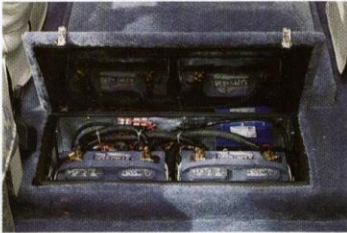


A queen bed with quality innerspring mattress (twin beds available in gas-powered models, if you prefer) assures you of a good night's sleep. The spacious cedar-lined wardrobes allow you to travel with all the clothes you'll need.

Both heating and ducted roof air conditioning are controlled by a conveniently-placed thermostat.



Location of batteries behind the engine cover makes routine maintenance easier than ever. (30' and 34' only)



Alcoa aluminum wheels, standard on the Cutter 35' pusher, add to its good looks while providing a stronger, lightweight wheel. (Available February, 1998)

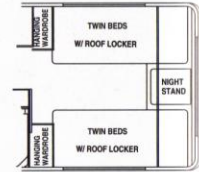


Exterior shower and service hook-ups are all readily accessible in the centrally located system.

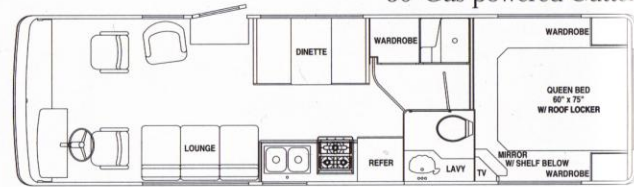
Cutter is designed to provide maximum exterior storage capacity. Large, carpeted compartments with aluminum doors (two pass-through compartments in most models) allow you to carry everything you'll need and give you easy access to it as well.



Optional twin beds available 30' and 34'



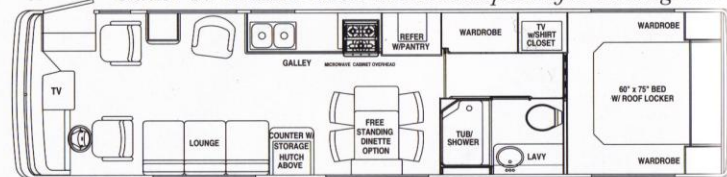
30' Gas-powered Cutter



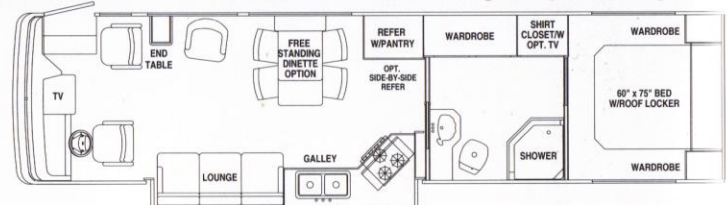
34' Gas-powered Cutter



Cutter 35' Diesel Pusher shown with optional free-standing dinette



Cutter 35' Diesel Pusher Slide shown with optional free-standing dinette



THE CUTTER MOTORHOME STANDARD FEATURES AND OPTIONS

CHASSIS	GAS		DIESEL		DRIVER'S COMPARTMENT	GAS		DIESEL		BEDROOM	GAS		DIESEL		APPLIANCES	GAS		DIESEL	
	30'	34'	35'	35' Slide		30'	34'	35'	35' Slide		30'	34'	35'	35' Slide		30'	34'	35'	35' Slide
Alternator—105-amp Chevy/100-amp Freightliner w/Heavy-duty Isolator	S	S	S	S	Leather Driver and Co-pilot Seats w/Integrated 3-point Seat Belts w/Retractors Swivel & Reclining Mechanism	S	S	S	S	Pleated Night Shades (bedroom)	S	S	S	S	Air Conditioners, (2) Ceiling-ducted	S	S	S	S
Battery Disconnect (auxiliary)	S	S	S	S	Powered Driver Seat	S	S	S	S	Fan-Tastic® Roof Vent w/Wall Thermostat and Rain Sensor	O	O	O	O	Carbon Monoxide Detector	S	S	S	S
Battery, Main (1)					Powered Passenger Seat	O	O	O	O	Rear End Locker	S	S	S	S	Fire Extinguisher	S	S	S	S
Auxiliary Batteries (2)	S	S	NA	NA	Deluxe Side Panels Driver/Passenger	S	S	S	S	Twin Beds w/Night Stand	O	O	NA	NA	Smoke Detector	S	S	S	S
Battery Main (2) on Freightliner					Instrument Panel (analogue)	S	S	S	S	Queen Bed w/Shirt Closets	O	O	S	S	LPG Detector	S	S	S	S
Auxiliary (2)	NA	NA	S	S	Inverter 130-watt (dash TV only)	O	O	NA	NA	APPLIANCES					SYSTEMS ELECTRIC				
Back-up Buzzer	S	S	S	S	Rear Vision TV Monitor w/2-position Cameras	O	O	S	S	Mobile Theater Surround-sound System includes: VCP, CD Changer w/Remote and Prewire for Satellite Dish	NA	NA	S*	S*	120-volt Exterior Outlet	S	S	S	S
Pantograph Wipers w/Wet Arm and Controlled Cycle	S	S	S	S	12-v Accessory Power Ports (2) Lighter (1)	S	S	S	S	TV Antenna with Booster Includes: Cable hook-up, Telephone Hook-up and VCP Prewire	S	S	S	S	30-amp Power Cord	S	S	NA	NA
Bright Wheel Simulators	S	S	NA	NA	Privacy Blackout Curtain (wrap around)	S	S	S	S	Video Cassette Player w/Light in Cabinet & VCC	O	O	NA	NA	5-watt Solar Panel w/Meter	S	S	S	S
Alcoa Aluminum Wheels	NA	NA	S*	S*	Emergency Start Solenoid (switched)	S	S	S	S	13" Built-in TV in Bedroom (12-volt, queen bed only)	S	S	S	S	50-amp Power Center (converter)	S	S	S	S
Radial Tires	S	S	S	S	Front Overhead Cabinet	S	S	S	S	2-way Auto Refrigerator; 2 Door/8 Cu. Ft.	S	S	S	S	50-amp Service	O	O	S	S
Spare Tire Winch and Tire	S	S	NA	NA	Beverage Tray	S	S	S*	S*	Side-by-side 10 cu. ft. 2-way Auto Refrigerator	NA	NA	O	O	1,500-watt Trace Inverter w/2 Batteries	NA	NA	S	S
Exhaust Brake	NA	NA	S	S	Turn Signal, Cruise, Wipers/Washers	S	S	S	S	3-burner Cooktop w/Oven and Black Glass	O	O	O	O	Fan-Tastic®, Roof Vent w/Built-in Thermostat and Rain Sensor (lounge)	S	S	S	S
Full Air Brakes	NA	NA	S	S	GALLEY					3-burner Cooktop w/Storage Drawers	S	S	S	S	Generator—5.5	S	S	NA	NA
Rear Automotive Heater	S	S	NA	NA	Bronze V-groove Mirrored Insert in Overhead Cabinets (clear bevel 35')	S	S	S	S	6-gal. DSI Water Heater w/MotorAid®	S	S	S	S	Generator—6.5 LP	NA	NA	S	S
Trailer Hitch 400 HW/4,000 GVW	S	S	NA	NA	Convection Microwave	S	S	S	S					Generator—7.5 KW Quiet Diesel	NA	NA	O	O	
Trailer Hitch 500 HW/5,000 GVW	NA	NA	NS	S	Porcelain Sink with Sink Covers (2)	S	S	S	S					Furnace—35,000 BTU	S	S	S	S	
EXTERIOR					Water Purifier w/Separate Faucet (NA CSA)	S	S	S	S					12-volt Fluorescent Recessed Ceiling Lights	S	S	S	S	
4" Roof w/one-piece Textured Fiberglass Finish	S	S	S	S	Dinette: 38"	S	S	S	S					Walkway Lights	S	S	S	S	
Laminated Roof, Sidewalls and Floor	S	S	S	S	Free-standing Dinette w/2 Chairs (4 chairs 35')	O	O	O	O					Heated Holding Tanks	S	S	S	S	
Undercoating (wheel wells only)	S	S	S	S	Planked Flooring Galley Area	O	O	NA	NA										
Awning Rail, R.S. & C.S. w/Drip Edge	S	S	S	S	Spice Rack	S	S	NA	NA										
Window Awnings (NA CSA)	O	O	S*	S*	Corian® Galley Top	S	S	S	S										
C. S. Patio Awning	S	S	S	S	INTERIOR DECOR														
Bumpers, Integral w/ Front & Rear Fiberglass Cap	S	S	S	S	Oak Cabinets	S	S	S	S										
Docking Lights, Halogen	S	S	S	S	Oak Hardwood Tables & Countertops w/No-mar Finish (lounge & dinette)	O	O	S	S										
Driving Lamps, Halogen	S	S	S	S	Ceramic Tile Floor (galley and bathroom)	NA	NA	S*	S*										
Headlamps, Halogen	S	S	S	S	Pleated Day/Night Shades (lounge & dinette)	S	S	S	S										
Exterior Lighting Package Includes: Patio Light, Utility Light, Step Light and Baggage Compartment Lights	S	S	S	S	Skylight w/Blackout Shade	O	O	O	O										
Air Horns	NA	NA	S	S	Decorative Pillows	S	S	S	S										
Keyless Entry	O	O	S	S	Vinyl Soft Ceiling	S	S	S	S										
Electric-keyed Dead Bolt (main door)	S	S	S	S	BATHROOM														
Electric-operated Entrance Step (double)	S	S	S	S	Bath Vent Powered (power lift 35')	S	S	S	S										
Exterior Mirrors w/Remote Control	S	S	S	S	Skylight Shower	NA	S	S	S										
Exterior Water Service with Shut-off	S	S	S	S	Chrome/Brass Fixtures	S	S	S	S										
Full Slider Windows w/Tinted Glass	S	S	S	S	Large Mirrored Medicine Cabinet	S	S	S	S										
*Dual Pane Windows	TBD	TBD	S	S	One-piece Fiberglass Shower	S	S	S	S										
Leveling Jacks	O	O	S	S	Single-pivot Brass Shower Door	S	S	S	S										
Pass-thru Trunk Storage	S	S	NA	NA	Toilet "Porcelain"	NA	NA	S	S										
Rear Ladder	S	S	S	S	Toilet w/Water Saver	S	S	NA	NA										
DRIVER'S COMPARTMENT					BEDROOM														
19" TV in Dash w/Interlock (110-volt)	S	S	S	S	Wardrobes, Lighted, Cedar-lined, Mirrored Oak Doors	S	S	S	S										
AM/FM Cassette, Digital, w/4 Speakers	S	S	NA	NA	Mattress—Innerspring	S	S	S	S										
Auto. A/C with Side Window Defrost	S	S	S	S	Bedspring and Pillows	S	S	S	S										
Auxiliary Defroster Fans	S	S	S	S															

* Feature Available February 1998

SPECIFICATIONS	30'		34'		35' Diesel		35' Diesel Slide	
	Chevy	Chevy	Freightliner	Freightliner	300 CAT	300 CAT	300 CAT	300 CAT
Chassis	Chevy	Chevy	Freightliner	Freightliner	300 CAT	300 CAT	300 CAT	300 CAT
Engine—Chevy Vortec	454	454	300 CAT	300 CAT	300 CAT	300 CAT	300 CAT	
Transmission	4-spd. O.D.	4-spd. O.D.	6-spd	6-spd	6-spd	6-spd	6-spd	
Actual Length	30'2"	33'9"	35'4"	35'4"	35'4"	35'4"	35'4"	
Exterior Width	101"	101"	101"	101"	101"	101"	101"	
Exterior Height w/AC	11'2"	11'2"	11'8"	11'8"	11'8"	11'8"	11'8"	
Interior Height	78.5"	78.5"	78.5"	78.5"	78.5"	78.5"	78.5"	
Interior Width	95"	95"	95"	95"	95"	95"	95"	
Slide-out Room Dimensions	NA	NA	NA	16" x 153" x 65"	NA	NA	NA	
GAWR, Front—Gross Axle Weight Rating	5,500	5,500	9,350	9,350	9,350	9,350	9,350	
GAWR, Rear—Gross Axle Weight Rating	11,000	11,000	17,000	17,000	17,000	17,000	17,000	
GAWR, TAG—Gross Axle Weight Rating (rubber torsion TAG axle)	NA	4,000	NA	NA	NA	NA	NA	
GCWR—Gross Combined Weight Rating	21,000	21,000	31,350	31,350	31,350	31,350	31,350	
GVWR—Gross Vehicle Weight Rating	16,500	19,500	26,350	26,350	26,350	26,350	26,350	
UVW, Island Queen—Unloaded Vehicle Weight	14,270	15,580	19,580	20,470	19,580	20,470	20,470	
NCC—Net Carrying Capacity	2,230	3,920	6,770	5,880	6,770	5,880	5,880	
Wheelbase	190"	190"	228"	228"	228"	228"	228"	
Fuel Tank	75	75	90	90	90	90	90	
LPG Tank (lbs) (105 w/Q. D. gen.)	90	90	182	182	182	182	182	
Fresh Water Tank w/Drain Valve (gal.)	60	63	63	60	63	60	60	
Grey Water Holding Tank (gal.)	70	70	60	60	60	60	60	
Black Water Holding Tank (gal.)	50	43	50	43	50	43	43	
Furnace BTU	35,000	35,000	35,000	35,000	35,000	35,000	35,000	
Exterior Storage Volume (cu. ft.)	120	146	130	95	130	95	95	

Specifications are subject to change without notice. Canadian specifications will differ from U.S.